

**MONOBLOCK FOR MODULAR SYSTEM TYPE EM223R**  
**MONOBLOCK FUER VERKETTUNGEN TYP EM223R**

**EUROFLUID** 12.3  
 HYDRAULIC

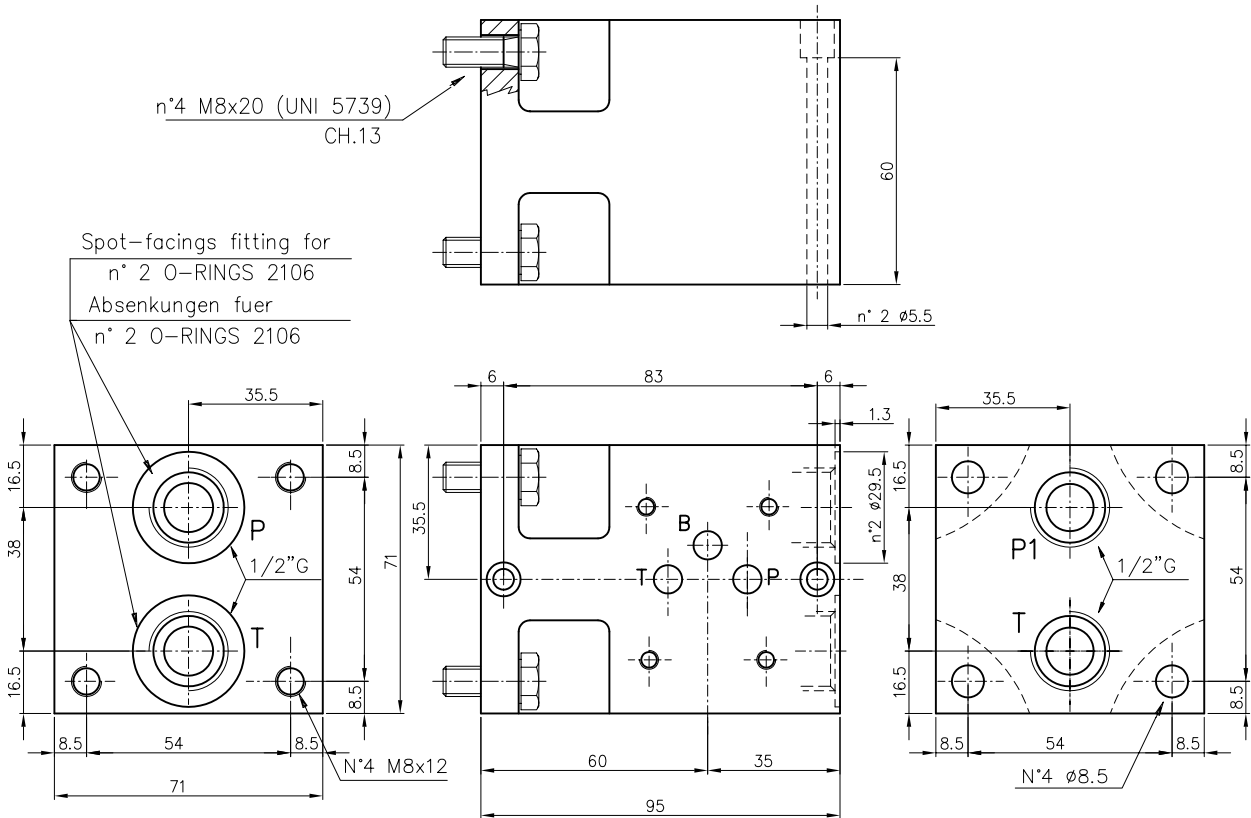
**CETOP 3**  
**NG6**

Modular block for pressure reducing valve, with ports P-T = 1/2" G.

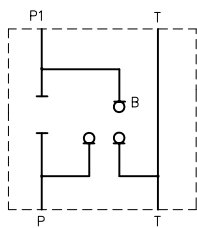
Modularblock fuer Druckminderventil mit seitlichen Anschluesen P-T = 1/2" G

Weight = 3.2 Kg

Gewicht = 3.2 Kg



Symbol



NOTE: The monoblock is equipped with the following commercial parts:  
 Nr.4 H.H. screws M8x20 - UNI 5739 - 8.8 - zinc plated  
 Nr.4 washer DIN 6798 A  
 Nr.2 O-Rings 2106 - 90 Sh.

BEMERKUNG : Der Monoblock ist standardmässig mit der folg.  
 Handelteile geliefert:  
 Nr.4 verzinkte Schrauben M8x20 uni 5739 - 8.8  
 Nr.4 Unterlegscheibe DIN 6798 A  
 Nr.2 O-Ring 2106 - 90 Sh.

Ordering code  
 Bestell-Code

