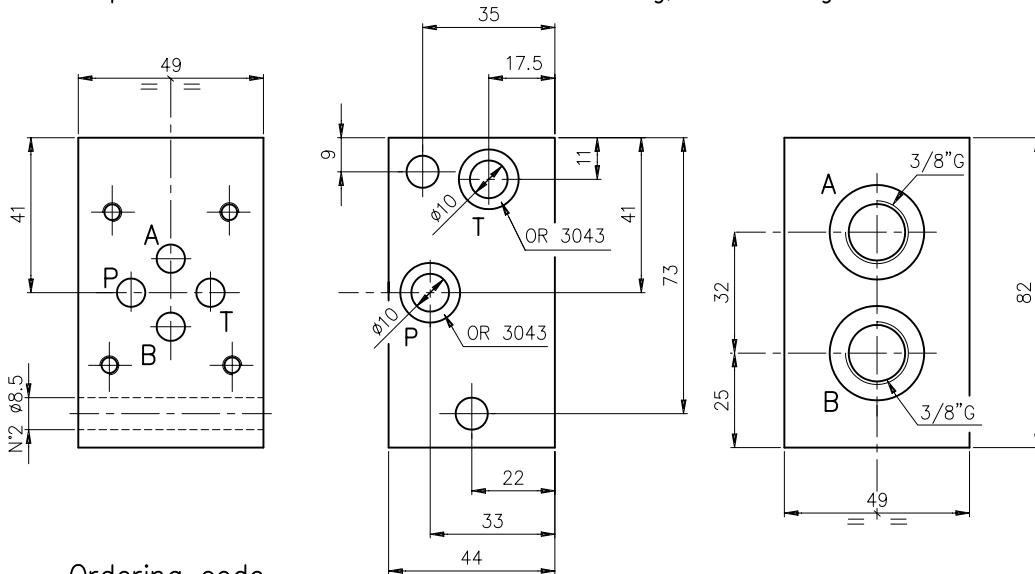


**SANDWICH PLATE EC..2A1338 AND END PLATE EC2A33**  
**ZWISCHENPLATTE EC..2A1338 UND ENDPLATTE EC2A33**

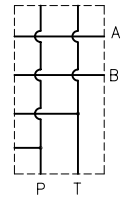
**PACKING PLATES**  
**VERKETTUNGSPLATTEN**  
**CETOP 3 - CETOP 5**

Sandwich plate for series or parallel connection, for 2 tie rods. Weight 1 kg  
 Zwischenplatte fuer Parallel- oder Serienschaltung, fuer 2 Zuganker. Gewicht 1 Kg

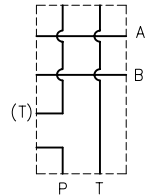


Hydr. symbol  
 Symbol

Parallel conn.  
 Parallelschalt.



Series conn.  
 Serienschalt.



Ordering code  
 Bestell-Code

Sandwich plate = C  
 Zwischenplatte

(if not indicated) = parallel  
 (wenn nicht angegeben)  
 fuer Serie

for 2 tie rods = 2  
 fuer 2 Zuganker

EC \* 2 A 1 3 38

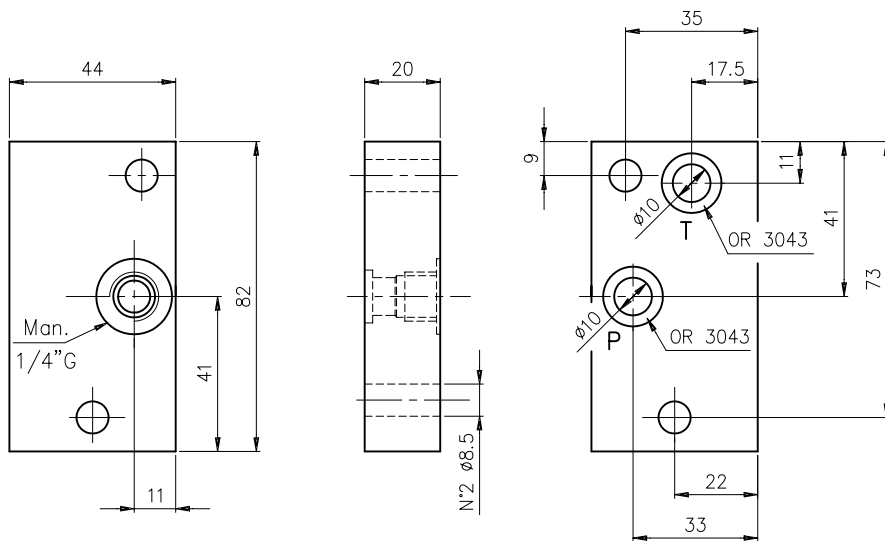
38 = 3/8" G

CETOP3

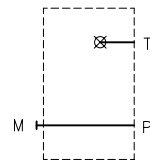
1 = Sandwich plate  
 Zwischenplatte

A = boring type  
 Bohrausfuehrung

End plate for modular systems, for 2 tie rods. Weight 0.6 kg  
 Endplatte fuer Verkettungen, fuer 2 Zuganker. Gewicht 0.6 Kg



Hydr. symbol  
 Symbol



Ordering code  
 Bestell-Code

End plate = C  
 Endplatte

for 2 tie rods = 2  
 fuer 2 Zuganker

EC 2 A 3 3

CETOP 3

3 = Endplate  
 Endplatte

A = boring type  
 Bohrausfuehrung