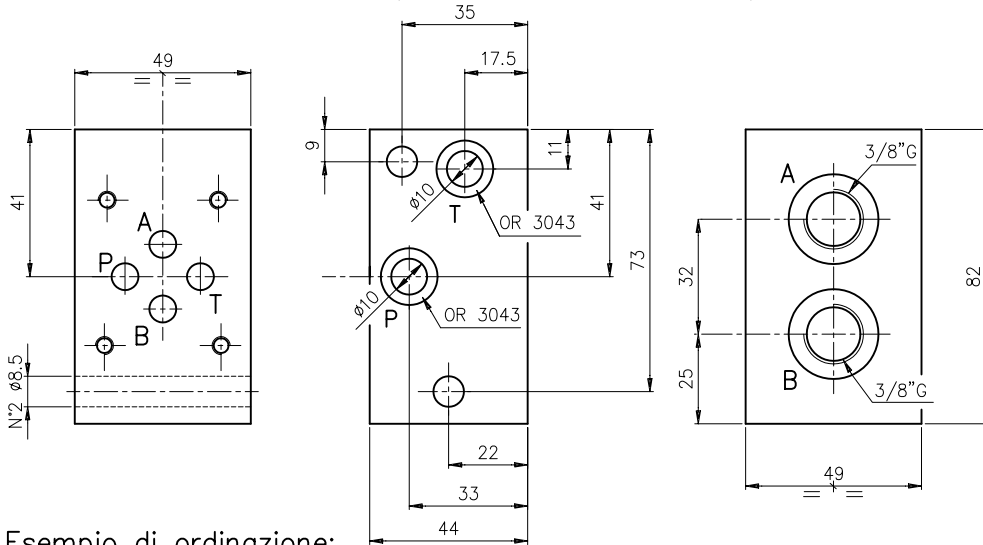
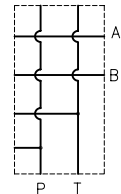


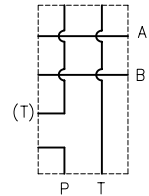
Base intermedia in parallelo o in serie (versione 2 tiranti). Peso = 1 Kg
Embase intermediaire en parallele ou en serie (version 2 tirants). Poids = 1 Kg



schema idraulico
schema hydraulique
(parallelo/parallele)



schema idraulico
schema hydraulique
(serie/serie)



Esempio di ordinazione:
Exemple de commande:

EUROFLUID

Base componibile = C
Embase empilable

(Se non indicato) parallelo =
(Si pas d'indication) parallele

serie/serie = S

EC * 2 A 1 3 38

38 = 3/8" G

CETOP 3

1 = Base intermedia
Embase intermediaire

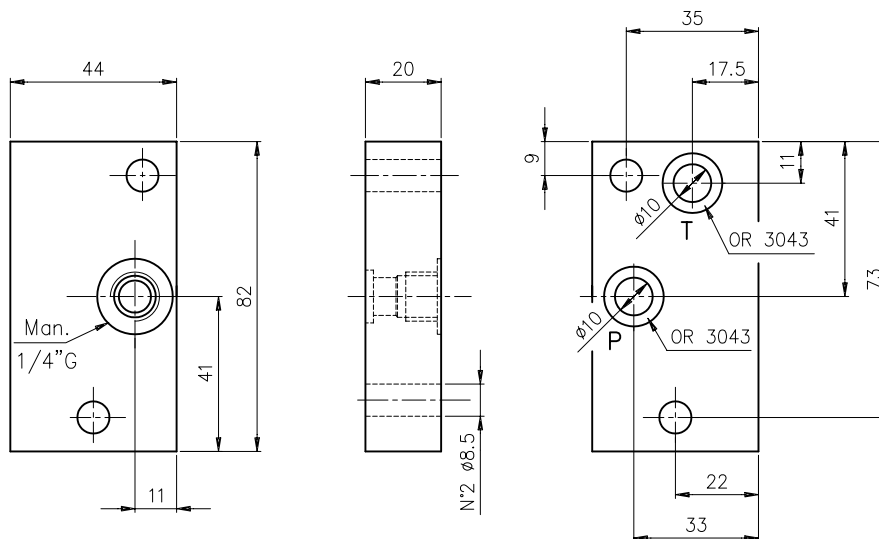
A = Tipo foratura

Type de perçage

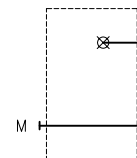
Version 2 tirants/Versione 2 tiranti = 2

Chiusura per base componibile (versione 2 tiranti). Peso = 0.6 Kg

Plaque de fermeture pour embase empilable (version 2 tirants). Poids = 0.6 Kg



schema idraulico
schema hydraulique



Esempio di ordinazione:
Exemple de commande:

EUROFLUID

Base componibile = C
Embase empilable

Versione 2 tiranti = 2
Version 2 tirants

EC 2 A 3 3 — CETOP 3

3 = Coperchio di chiusura
Plaque de fermeture

A = Tipo foratura

Type de perçage