

SUB PLATE TYPE EAS338L AND TYPE EAS338P
GRUNDPLATTE TYP EAS338L UND TYP EAS338P

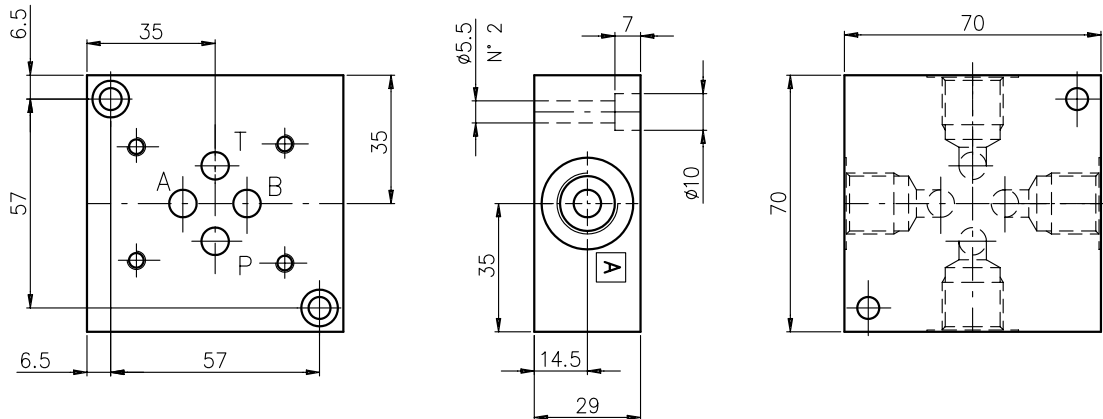


Sub plate with ports A-B-P-T on side, 3/8"G. Weight = 0.35 Kg

Material: aluminium (2011-FC1) anodized. Max operating pressure: 210 bar

Grundplatte, A-B-P-T seitlich 3/8"G. Gewicht = 0.35 Kg

Werkstoff: aluminium 2011 (AlCuBiPb) eloxiert. Max Betriebsdruck: 210 bar



Ordering code:
 Bestell-Code:

EUROFLUID Aluminium sub plate Grundplatte aluminium
 CETOP 3 = 3

EAS **3** **38** **L**

L side ports
 seitl. Anschlüssen

38 = 3/8"G

Hydraulic symbol
 symbol



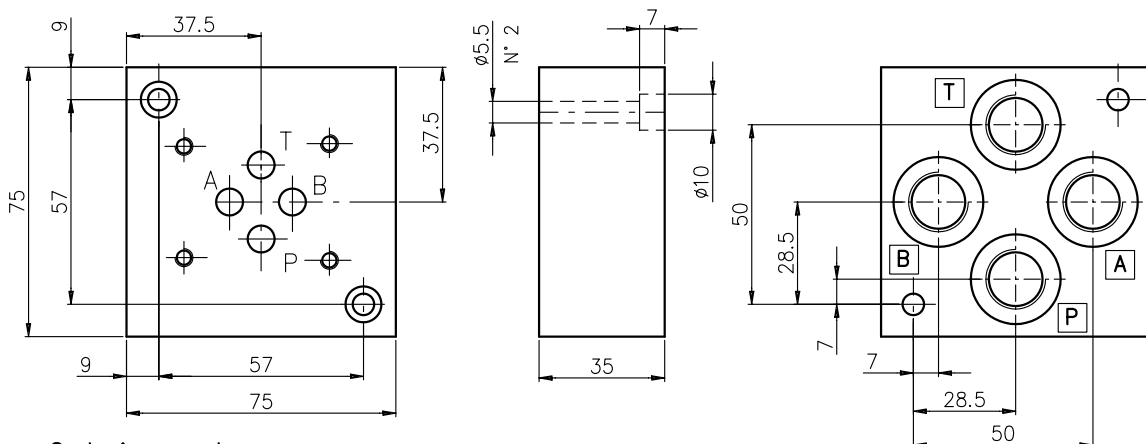
Set of 10 pcs. / Satz von 10 Stk.

Sub plate with ports A-B-P-T on rear, 3/8"G. Weight = 0.5 Kg

Material: aluminium (2011-FC1) anodized. Max operating pressure: 210 bar

Grundplatte, A-B-P-T ruckseitig, 3/8"G. Gewicht = 0.5 Kg

Werkstoff: aluminium 2011 (AlCuBiPb) eloxiert. Max Betriebsdruck: 210 bar



Ordering code:
 Bestell-Code:

EUROFLUID Aluminium sub plate Grundplatte aluminium
 CETOP 3 = 3

EAS **3** **38** **P**

P rear ports
 ruckseitige Anschlüssen

38 = 3/8"G

Hydraulic symbol
 symbol



Set of 10 pcs. / Satz von 10 Stk.