

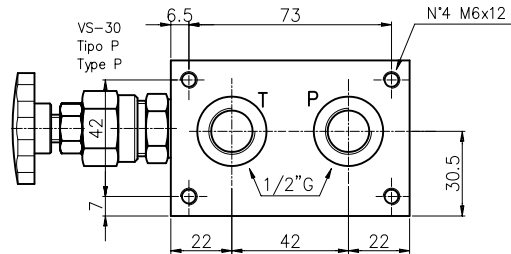
SUBPLATE FOR MODULAR SYSTEMS TYPE EC3412P/...
GRUNDPLATTE FUER VERKETTUNGEN TYP EC3412P/...



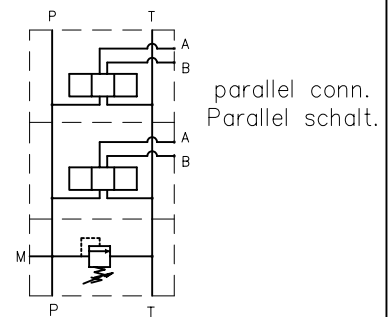
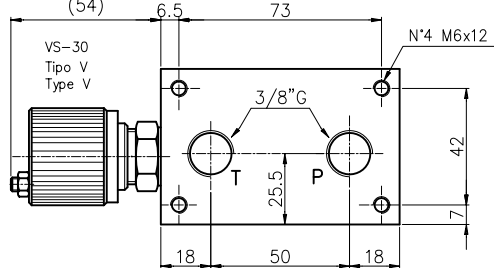
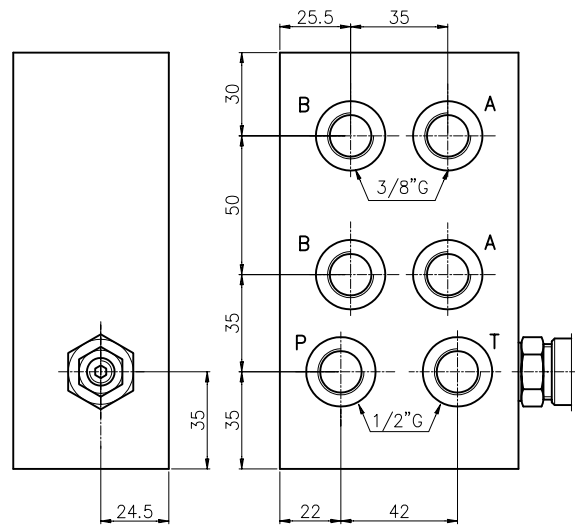
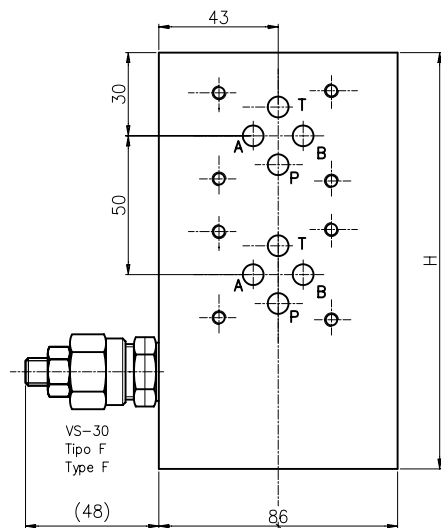
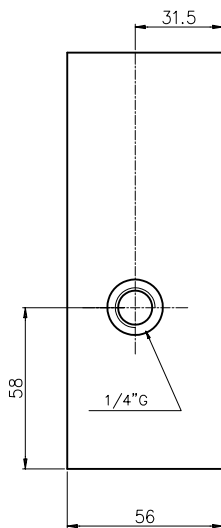
PACKING PLATES
VERKETTUNGSPLATTEN
CETOP 3 - CETOP 5

Subplate for modular systems with rear ports A-B = 3/8" G, P-T = 1/2" G, with pressure relief valve.(RV)

Grundplatte fuer Verkettungen mit A-B = 3/8" G, P-T = 1/2" G mit Druckbegrenzungsventil.(DBV)



N° Elem.	H	(Kg)
1	100	3
2	150	5
3	200	7
4	250	9



Ordering code
Bestell-Code

subplate for mod. systems =
Grundplatte fuer Verkettungen

CETOP 3

4 tie rods - 4 Zuganker = 4

1/2" G = 12

rear ports / rueckseitige Anschl. = P

N° elem. / Anzahl Elemente = 1-2-3-4

EC 3 4 12 P / * * * *

Setting / Einstellung

F = by key / Schlussverstellung

V = handwheel / Aluhandrad

p = plastic knob / Kunststoff-handrad

spring type / Feder Type

0 = 5-50 bar

1 = 30-100 bar

2 = 50-210 bar

3 = 100-350 bar

X = with RV / mit DBV

Z = prearranged for RV
fuer DBV vorgebohrt

NOTES : See page 50 for technical characteristics of RV

BEMERKUNG : Siehe techn. Daten des DBV auf Seite 50