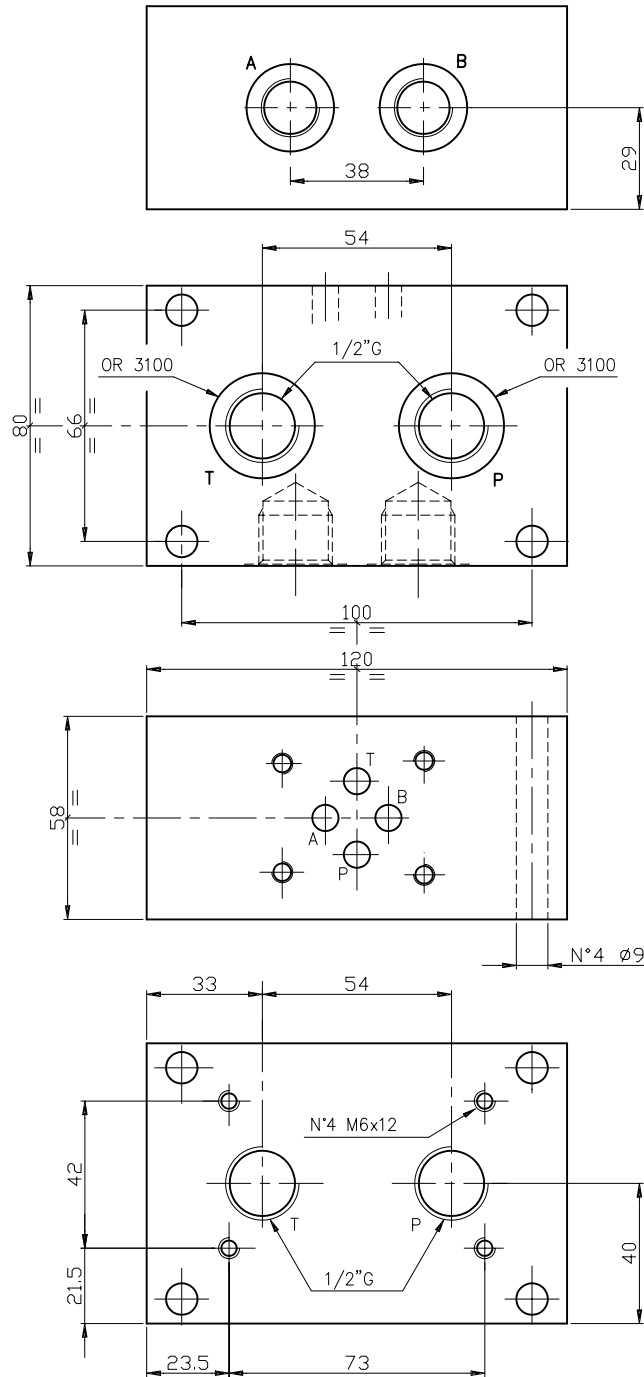
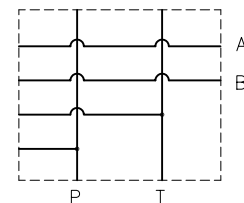


BASE COMPONIBILE TIPO EC3/5412P
EMBASE EMPILABLE TYPE EC3/5412P

Base componibile CETOP3 per CETOP5 con utilizzi A-B posteriori da 1/2"G .
 Peso = 3.3 Kg
 Embase empilable CETOP3 pour CETOP5 avec sorties A-B arrieres en 1/2"G.
 Poids = 3.3 Kg.



schema idraulico
 schema hydraulique



Esempio di ordinazione:
 Exemple de commande:

EUROFLUID
 Base componibile = C
 Embase empilable

