

VALVE BODY CAVITY SAE 4 WAYS

VENTILGEHAUSE FORMBOHRUNG SAE 4 WEGE



Valve body cavity SAE 4 ways – Connections type gas

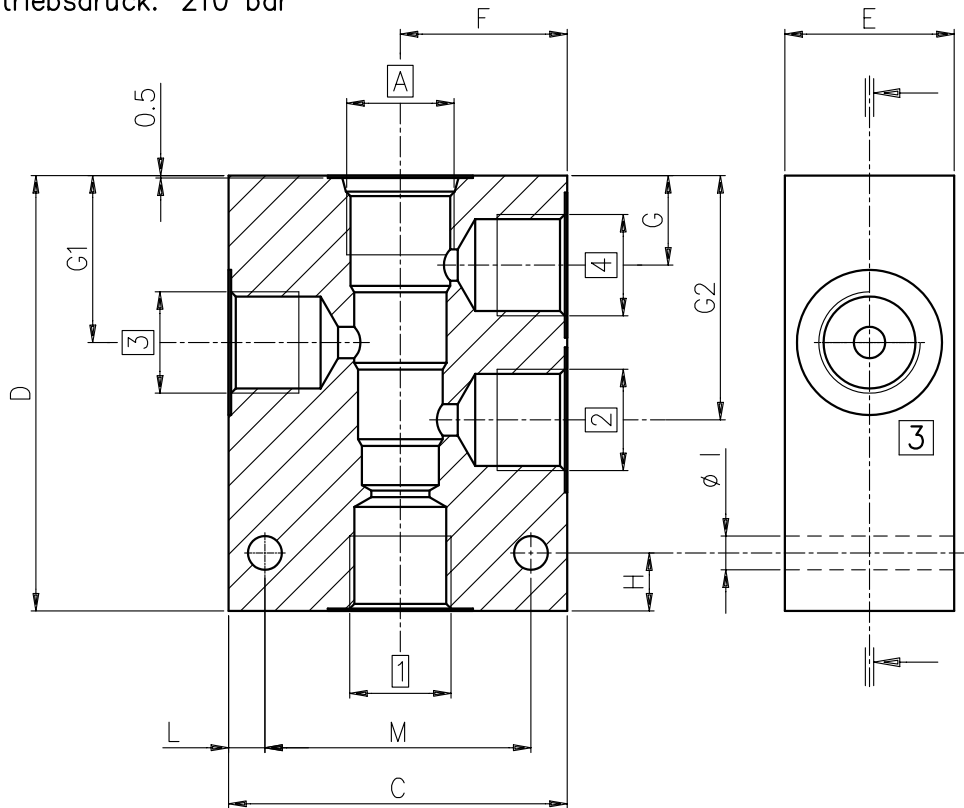
Material: aluminium (2011-FC1) anodized.

Max operating pressure: 210 bar

Ventilgehäuse Formbohrung SAE 4 Wege – Anschlüsse Typ Gas

Werkstoff: aluminium 2011 (AlCuBiPb) eloxiert.

Max Betriebsdruck: 210 bar



CAVITY FORMBOHR.	A	1-2 3-4	C	D	E	F	G	G1	G2	H	I	L	M	Weight Gewicht (Kg)
SAE 8/4	3/4"-16	3/8"G	59	80	30	30	15	29.5	43.5	12	7	7.5	44	0.4
SAE 10/4	7/8"-14	1/2"G	69	90	40	35	18.5	34	50	12	7	7.5	54	0.6
SAE 12/4	1"1/16-12	3/4"G	79	125	40	40	28.5	53.5	78	20	9	10	59	1.3
SAE 16/4	1"5/16-12	1"G	98	140	50	49.5	25	54	82	20	9	11	77	1.8

CAVITY FORMBOHR.	Article-code: Typ:
SAE 8/4	EAD084038
SAE 10/4	EAD104012
SAE 12/4	EAD124034
SAE 16/4	EAD164010

Set of 10 pcs.
Satz von 10 Stk.