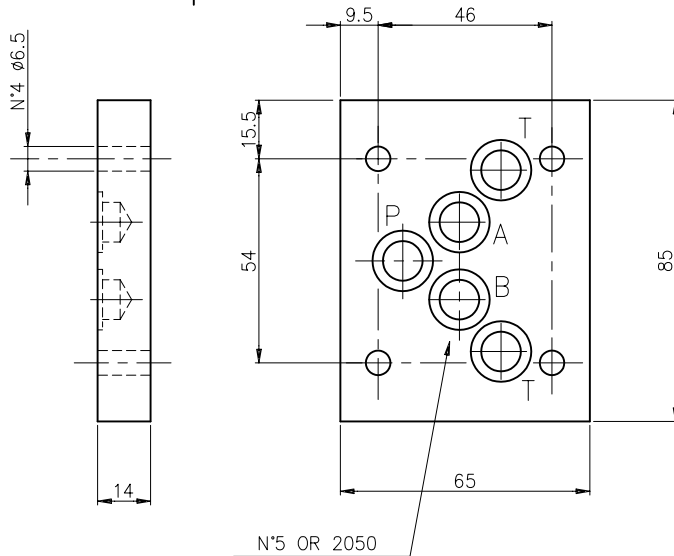
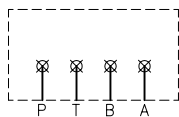


Base di chiusura/Plaque de fermeture
 Peso/Poids = 0.5 Kg
 Confezione da 10 pezzi / Par série de 10 pc.

schema idraulico
 schema hydraulique



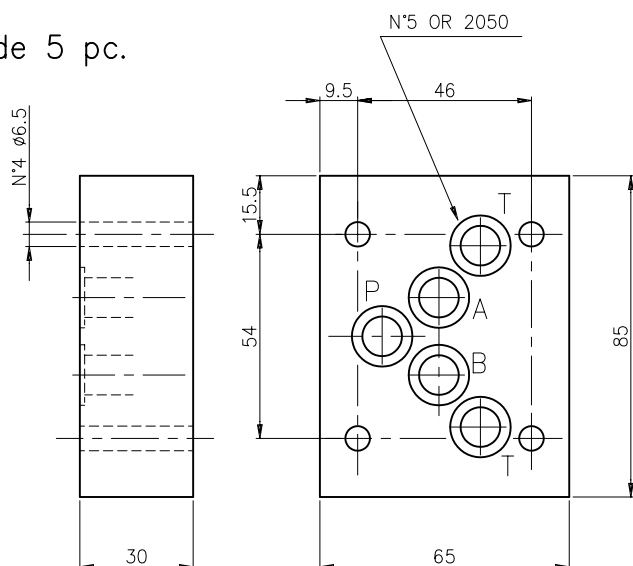
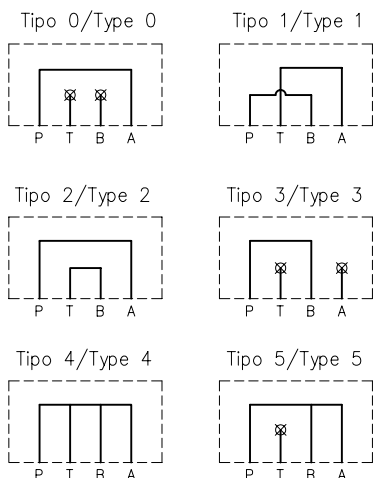
Esempio di ordinazione:
 Exemple de commande:

EUROFLUID Base di chiusura = B1
 Plaque de fermeture

EB1 0 5 — CETOP 5
 0 = P-T-B-A chiusi / fermèe

Base di chiusura e collegamento/Plaque de fermeture et de liaison.
 Peso/Poids = 1,1 Kg
 Confezione da 5 pezzi / Par série de 5 pc.

schema idraulico
 schema hydraulique



Esempio di ordinazione:
 Exemple de commande:

Base di chiusura e collegam. = B2
 Plaque de fermeture et de liaison

EB2 * 5 — CETOP 5
 0-1-2-3-4-5
 Vedere schemi a fianco
 Voir les schémas

**CETOP 5
 NG10**