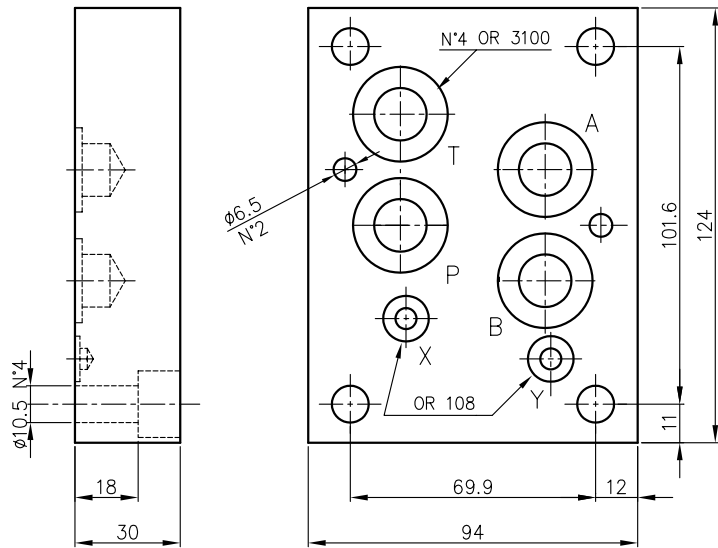


Base di chiusura CETOP 7.

Peso = 2.3 Kg

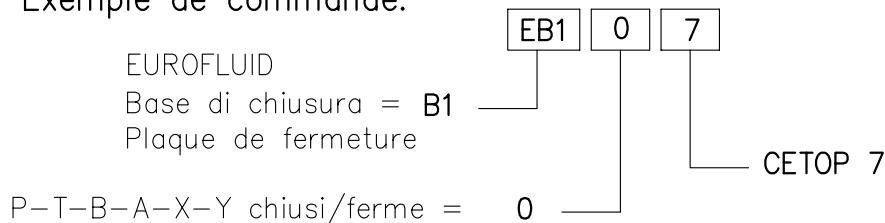
Plaque de fermeture CETOP 7.

Poids = 2.3 Kg

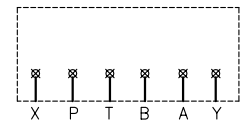


Esempio di ordinazione:

Exemple de commande:

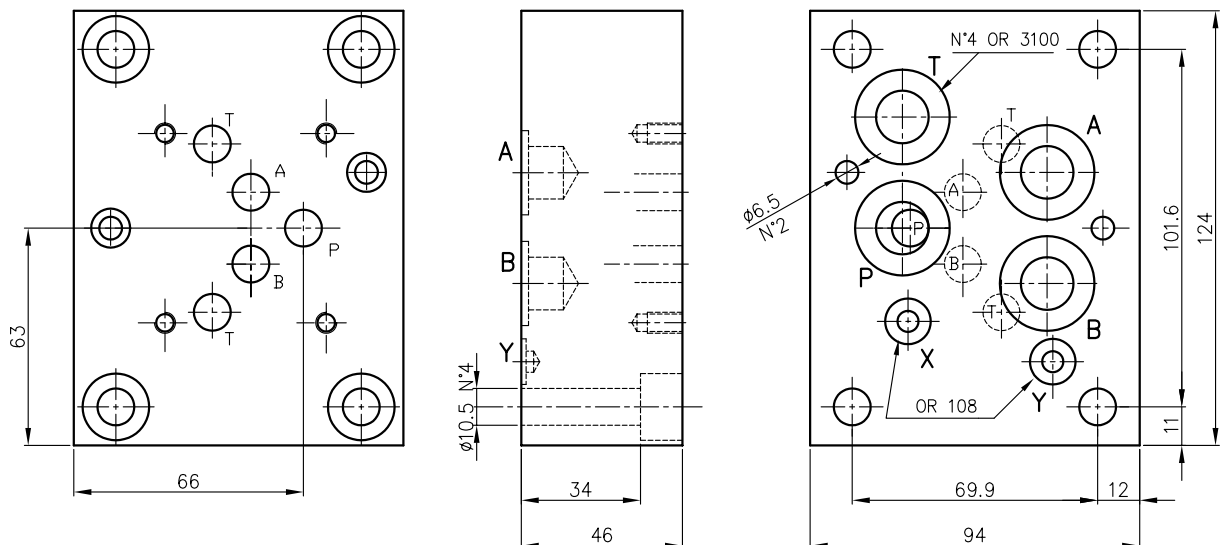


schema idraulico
 schema hydraulique



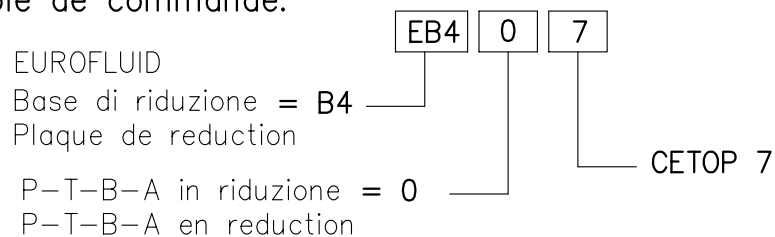
Base di riduzione CETOP 7/CETOP 5. Peso = 3.7 Kg

Plaque de reduction CETOP 7/CETOP 5. Poids = 3.7 Kg

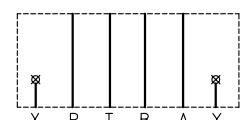


Esempio di ordinazione:

Exemple de commande:



schema idraulico
 schema hydraulique



**CETOP 7
 NG16**