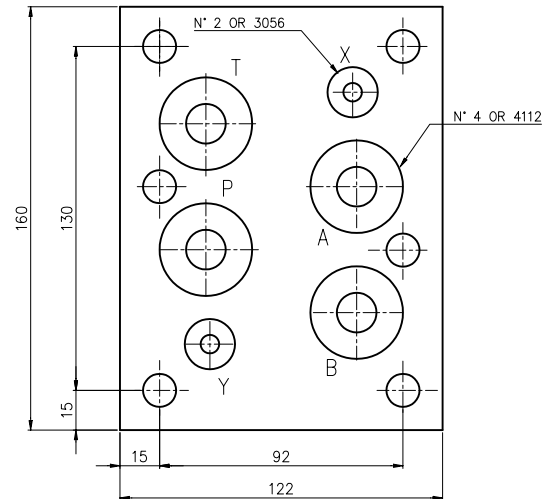
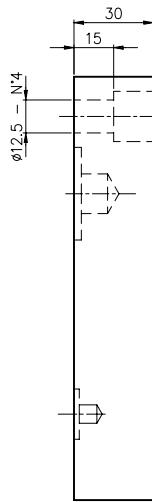


Base di chiusura CETOP 8

Peso = 4 Kg

Plaque de fermeture CETOP 8

Poids = 4 Kg



Esempio di ordinazione:

Exemple de commande:

EUROFLUID

Base di chiusura = B1

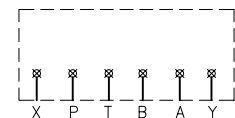
Plaque de fermeture

P-T-B-A-X-Y chiusi/ferme = 0

EB1 0 8

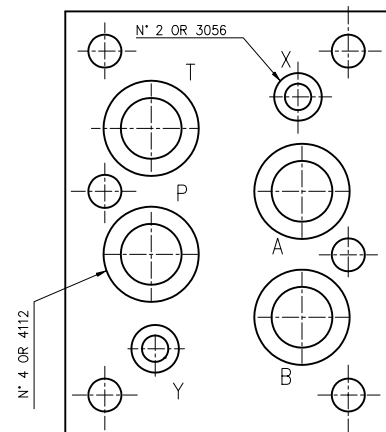
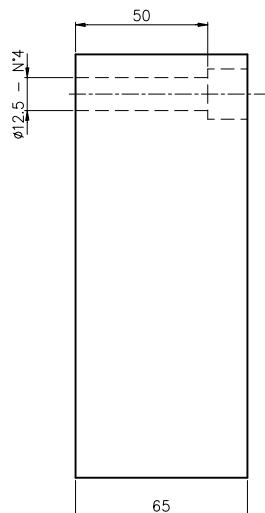
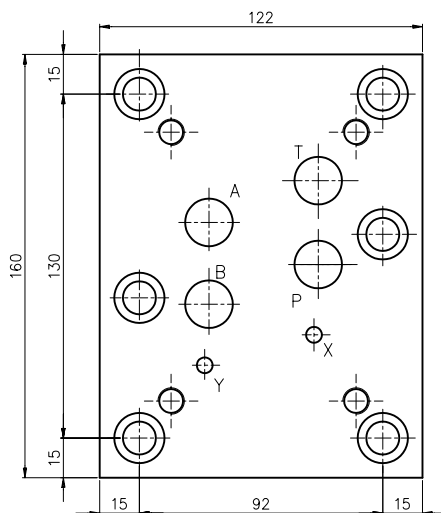
8

schema idraulico
 schema hydraulique



Base di riduzione CETOP 8/CETOP 7. Peso = 9 Kg

Plaque de reduction CETOP 8/CETOP 7. Poids = 9 Kg



Esempio di ordinazione:

Exemple de commande:

EUROFLUID

Base di riduzione = B4

Plaque de reduction

P-T-B-A in riduzione = 0

P-T-B-A en reduction

EB4 0 8

CETOP 8

schema idraulico
 schema hydraulique

