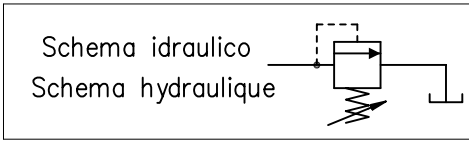
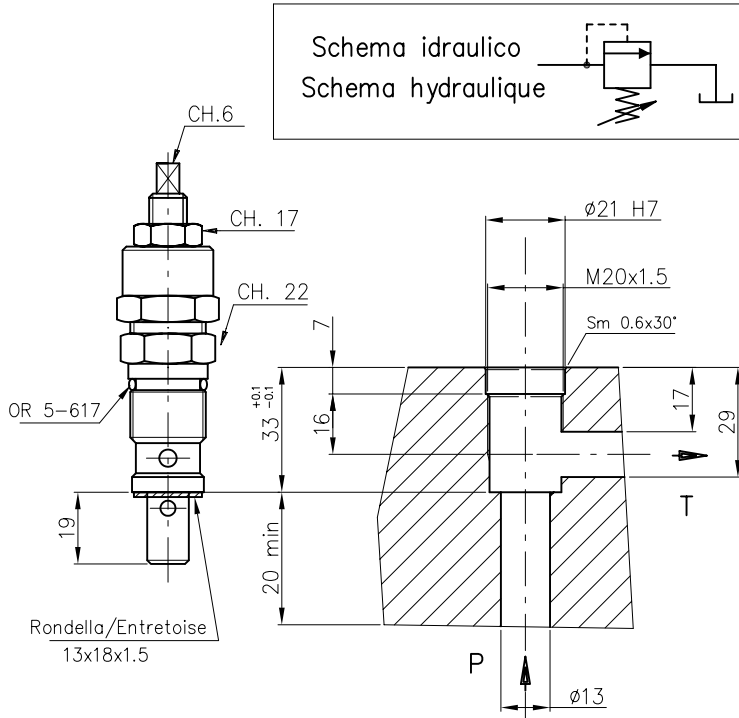


VALVOLA LIM. DI PRESSIONE TIPO VM-50 E TAPPO ETVS30
VALVE LIMITEUR DE PRESSION TYPE VM-50 ET BOUCHON ETVS30

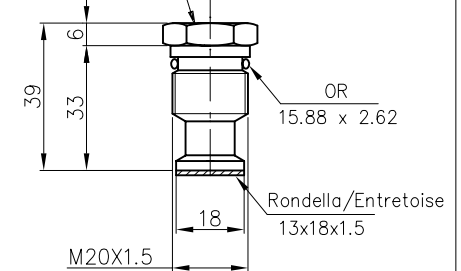


Valvola limitatrice di pressione tipo : VM-50
 Valve limiteur de pression type : VM-50

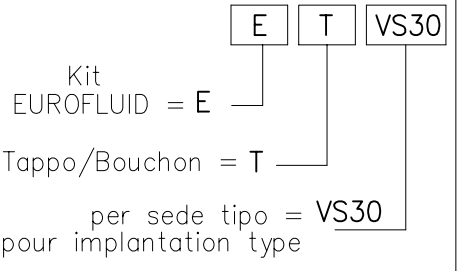
Oil Control Rexroth
 Bosch Group



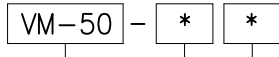
Tappo di chiusura per sede VM50
 Bouchon de fermeture pour siège VM50



Esempio di ordinazione
 Exemple de commande



Esempio di ordinazione:
 Exemple de commande



Valvola lim. di pressione tipo:
 Valve limiteur de pression type:

CARATTERISTICHE
 CARACTERISTIQUES

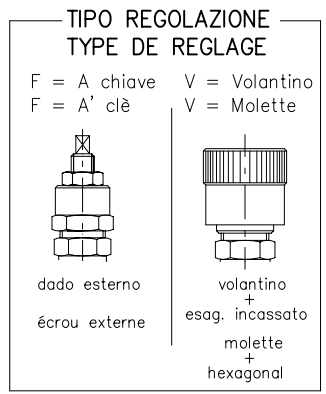
Pressione di esercizio
 Pression d'utilisation
 310 bar max

Portata max
 Débit max
 50 l/min

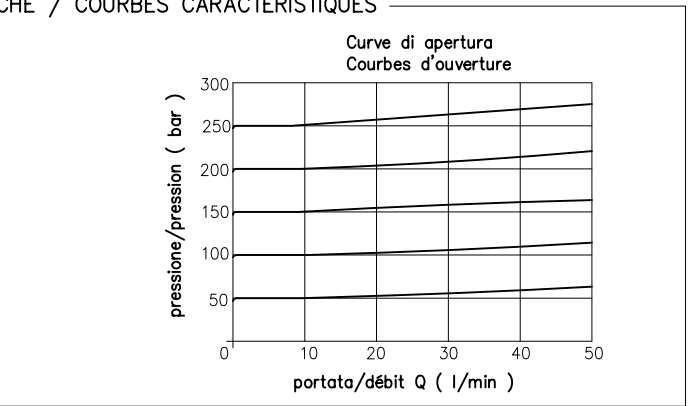
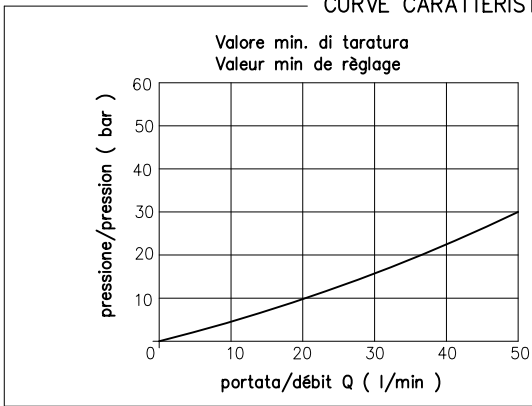
Peso/Poids
 0.17 Kg

TIPO MOLLA/TYPE DE RESSORT

N°	colore couleur	campo di taratura plage de réglage min-max (bar)
0	blu/bleu	0-70
1	verde/vert	20-150
2	bianco/blanc	50-210
3	nero/noir	120-310



CURVE CARATTERISTICHE / COURBES CARACTERISTIQUES



VALVOLE
 VALVES