

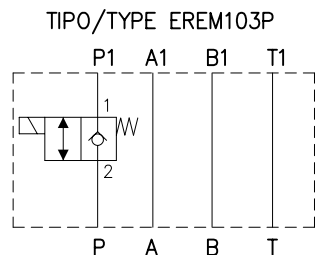
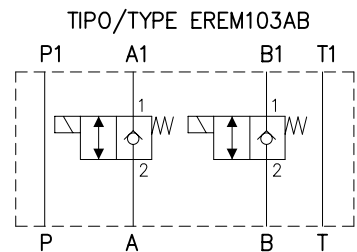
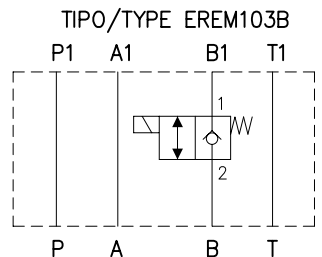
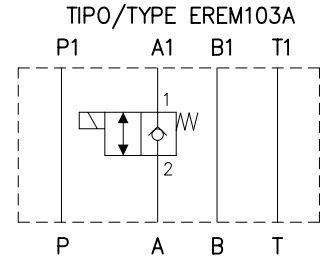
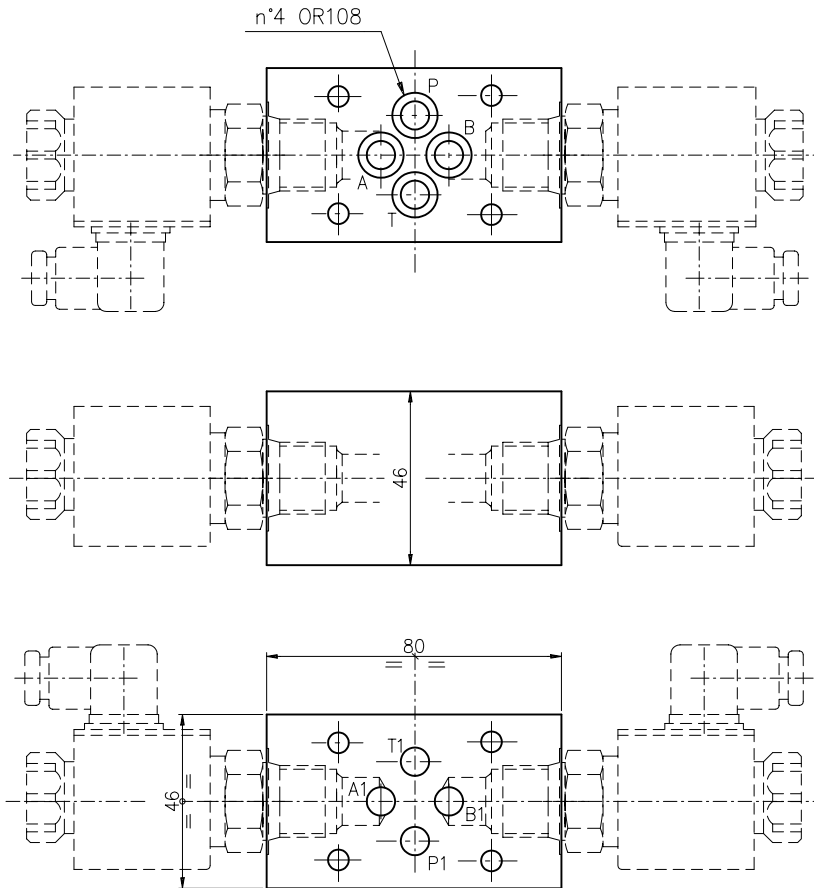
**VALVOLA DI RITEGNO A COMANDO ELETTRICO TIPO EREM103...**  
**CLAPET ANTIRETOUR A COMMANDE ELECTRIQUE TYPE EREM103...**



Valvola di ritegno a comando elettrico—CETOP 3, per montaggio modulare  
 Clapet antiretour à commande électrique—CETOP 3, pour montage modulaire

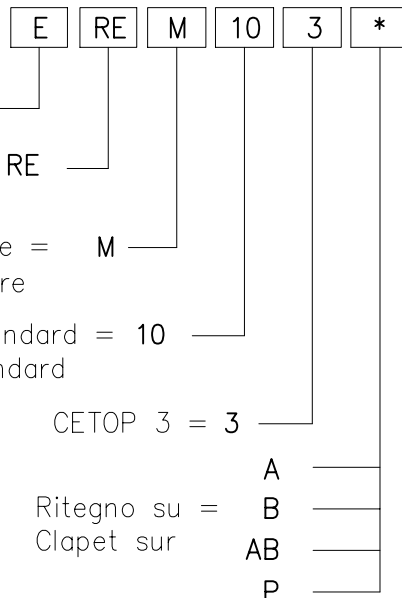
Peso= 1.2 Kg

Poids= 1.2 Kg

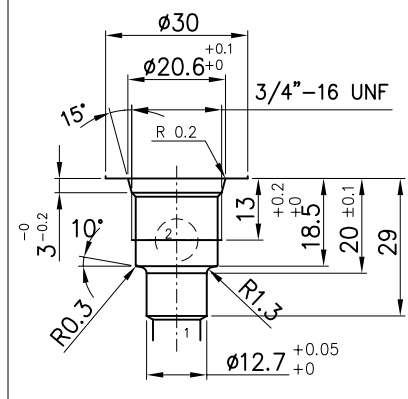


Esempio di ordinazione:

Exemple de commande:



dettaglio sede valvola VEI  
 détail implantation valve VEI



**VALVOLE  
 VALVES**