

VALVOLA SELETRICE TIPO EVSM103AB SELECTEUR DE DEBIT TYPE EVSM103AB



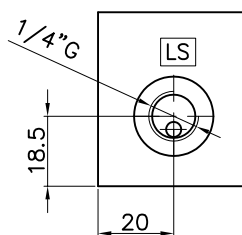
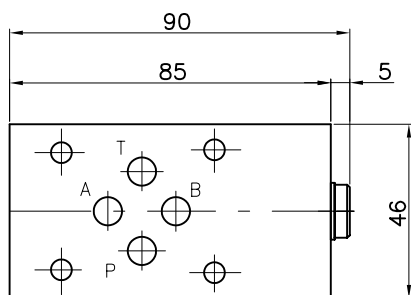
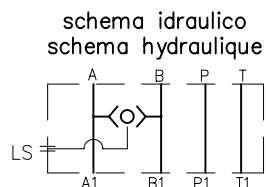
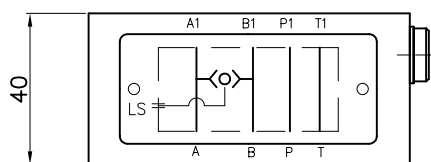
Valvola selettiva di pressione CETOP 3 modulare.
Utilizzo LS laterale da 1/4"G.

Selecteur de débit modulaire CETOP 3.
Sortie LS latérale de 1/4"G.

CARATTERISTICHE TECNICHE

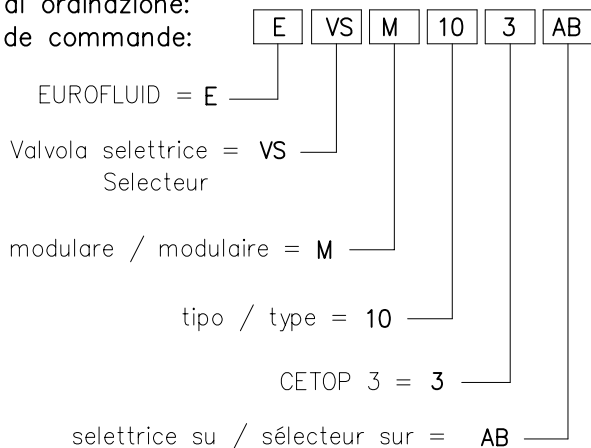
CARACTERISTIQUES TECHNIQUES

Portata nominale utilizzi / Débit nominal sorties:	— 40 l/min.
Portata nominale selettiva interna / Débit nominal selettiva interna:	— 6 l/min.
Pressione max / Pression max:	— 300 bar
Viscosità olio / Viscosité huile:	— 2,8–380 cSt
Temperatura olio / Température huile:	— -10° +80°
Tipo di olio / Type d'huile:	— minerale HL-HLP DIN 51524
Filtrazione / Filtration:	— 19/15 ISO 4466 (25micron)
Guarnizioni / Joints:	— NBR
Materiale del corpo / Matériel du corp:	— GG25
Peso / Poids:	— 1.0 Kg



VALVOLE
VALVES

Esempio di ordinazione:
Exemple de commande:



Caduta di pressione della cartuccia selettiva interna

Chute de pression de la cartouche selecteur interne

