

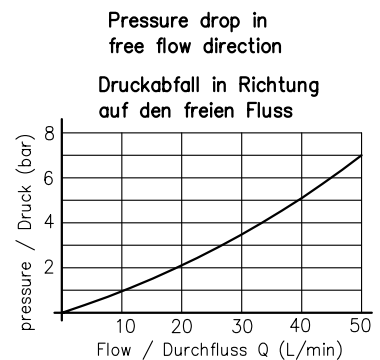
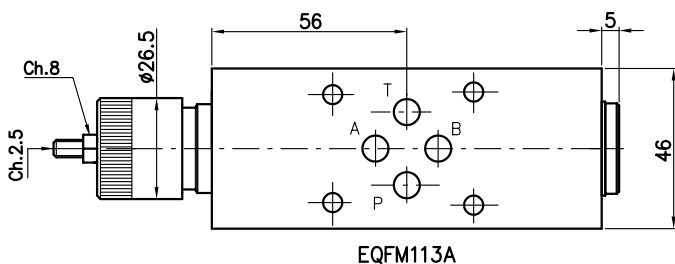
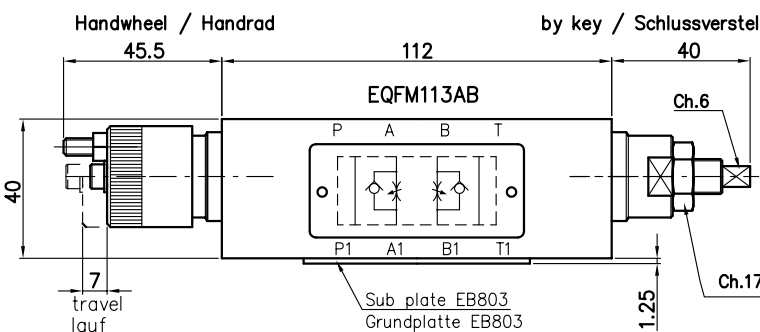
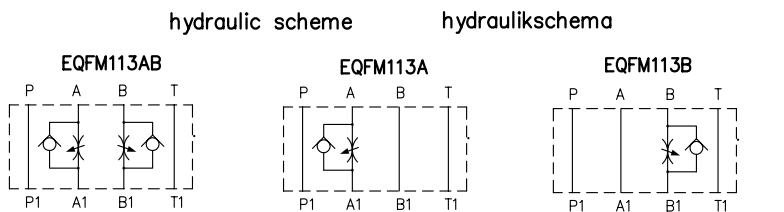
**FLOW REGULATING VALVE TYPE EQFM113...**  
**DROSSELRUECKSCHLAGVENTIL TYP EQFM113...**



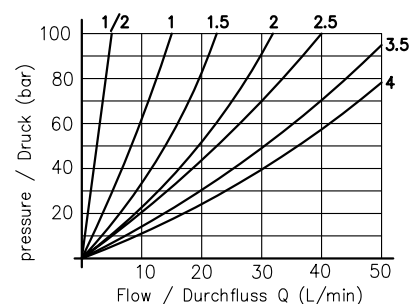
CETOP 3 modular single-way flow regulating valve, not compensated.  
 Fitted with O-Ring holding plate, by turning the valve body it's possible to adjust inlet or outlet flow.

Zwischenplatten-Drosselrueckschlagventile NG06 zur Drosselung der Volumenstroeme.  
 Durch Verwendung einer Dichtplatte (Seite 73.1) ist eine Zulauf-oder Ablaufregelung moeglich.

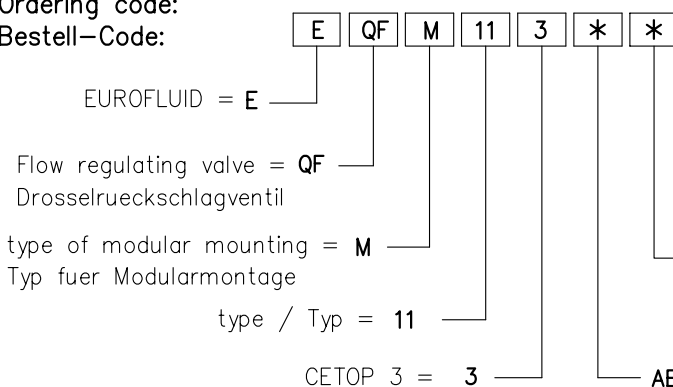
TECHNICAL SPECIFICATIONS	TECHNISCHE DATEN
Nominal flow / max Durchfluss:	— 50 l/min.
Max pressure / max Betriebsdruck:	— 300 bar
Oil viscosity / Ölviskosität:	— 2,8–380 cSt
Oil temperature / Öltemperatur:	— -10° +80°
Oil type / Öl Typ:	— mineral HL-HLP DIN 51524
Filtering / Ölfilterung:	— 19/15 ISO 4466 (25micron)
Gaskets / Dichtung:	— NBR + PTFE
Body material / Werkstoff:	— GGG40
Weight / Gewicht:	— 1.5 Kg



Pressure drop depending on handwheel turn number from opening start  
 Druckabfall in Abhängigkeit von den Drehungen des Handrads vom Beginn der Öffnung



Ordering code:  
 Bestell-Code:



Regolazione / Reglage  
 F = by key / Schlussverstellung  
 V = Handwheel / Aluhandrad

**VALVES  
 VENTILE**