



PRESSURE RELIEF VALVE

TYPE EVM103A... AND EVM103B...

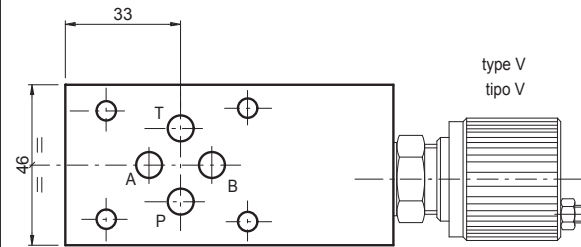
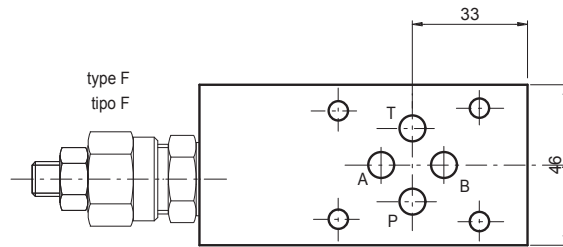
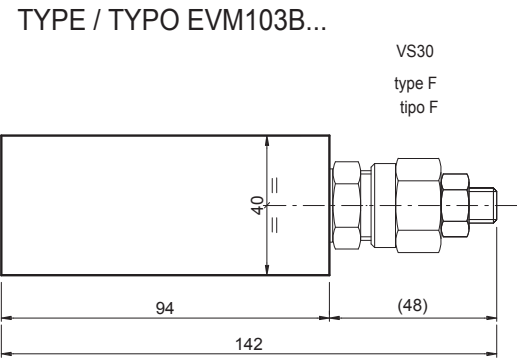
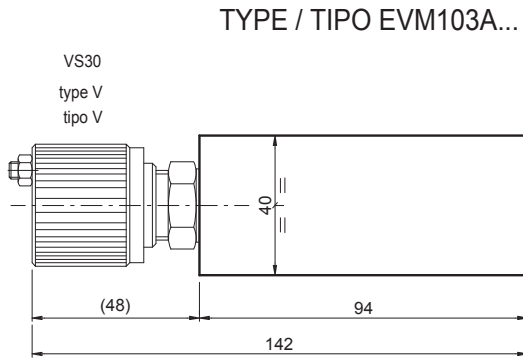
58

VALVOLA LIM. DI PRESSIONE

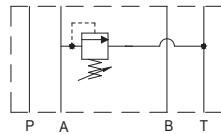
TIPO EVM103A... ED EVM103B...

PRESSURE RELIEF VALVE
VALVOLA LIM. DI PRESSIONE

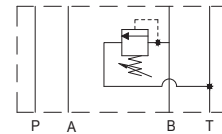
Direct acting pressure relief valve (RV) for modular mounting
Valvola limitatrice di pressione ad azione diretta per montaggio modulare
Weight / Peso = 1.4 Kg



setting on / con regolazione su A



setting on / con regolazione su B



Ordering code:

Esempio di ordinazione: E V M 10 3 * * * *

EUROFLUID — E

Relief valve / Valv. lim. di pressione = V — V

modular mounting = M — M

Tipo valvola modulare = M — M

version of discharge in T = 10 — 10

versione con scarico in T = 10 — 10

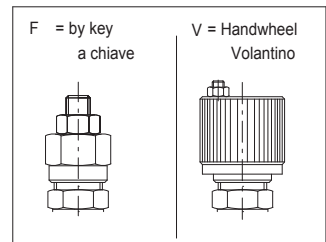
CETOP 3 — 3

setting on / regolazione su = A/B — *

with RV / con VLP = X — *

prearranged for RV = Z — *

con predisposizione per VLP = — *



Setting type / Tipo regolazione

spring type/tipo molla

N.	range/campo di taratura min-max (bar)
0	5-50
1	30-100
2	50-210
3	100-350

For technical features of VS-30 valve see page 50
Per le caratteristiche tecniche della valvola VS30 vedere pagina 50