

SHUTTLE VALVE

TYPE EVSM103AB

VALVOLA SELETRICE

TIPO EVSM103AB

65.9

SHUTTLE VALVE
VALVOLA SELETRICE

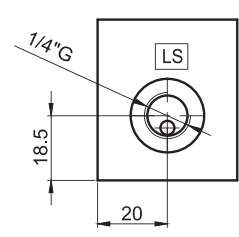
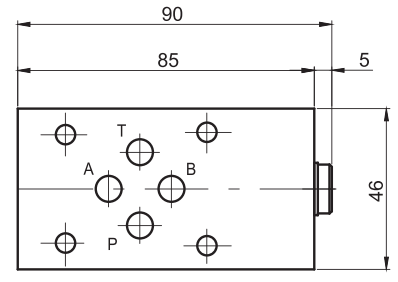
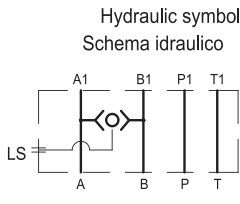
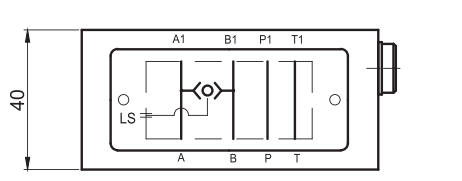
Modular pressure selector valve - CETOP 3

LS side port 1/4"G.

Valvola selettoria di pressione CETOP 3 modulare.

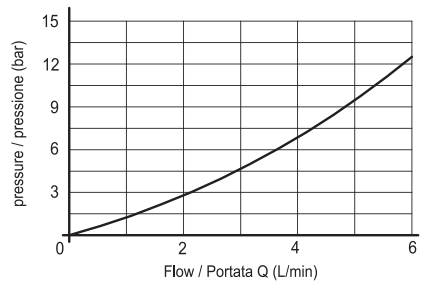
Utilizzo LS laterale da 1/4"G.

TECHNICAL SPECIFICATIONS	CARATTERISTICHE TECNICHE
Max flow ports/ Portata nominale utilizzi:	___ 40 l/min.
Max flow internal selector / Portata nominale selettoria interna:	___ 6 l/min
Max pressure / Pressione max:	___ 300 bar
Oil viscosity / Viscosità olio:	___ 2,8-380 cSt
Oil temperature / Temperatura olio:	___ -10° +80°
Oil type / Tipo di olio:	___ mineral HL-HLP DIN 51524
Filtering / Filtrazione:	___ 19/15 ISO 4466 (25micron)
Gaskets / Guarnizioni:	___ NBR + PTFE
Body material / Materiale corpo:	___ GG25
Weight / Peso:	___ 1.0 Kg



Pressure drop of the internal selector cartridge

Caduta di pressione della cartuccia selettoria interna



Ordering code:

Esempio di ordinazione: **E VS M 10 3 AB**

- EUROFLUID = E
- selector valve = VS
- valvola selettoria = VS
- modular mounting = M
- modulare = M
- type / tipo = 10
- CETOP 3 = 3
- selecting on / selettoria su = AB