

HIGH-LOW PRESSURE BLOCK

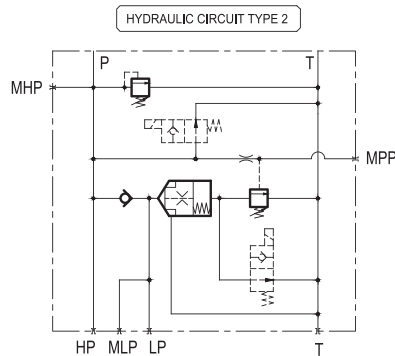
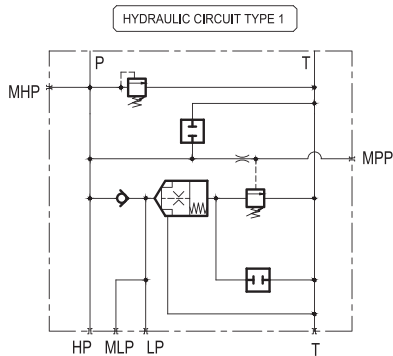
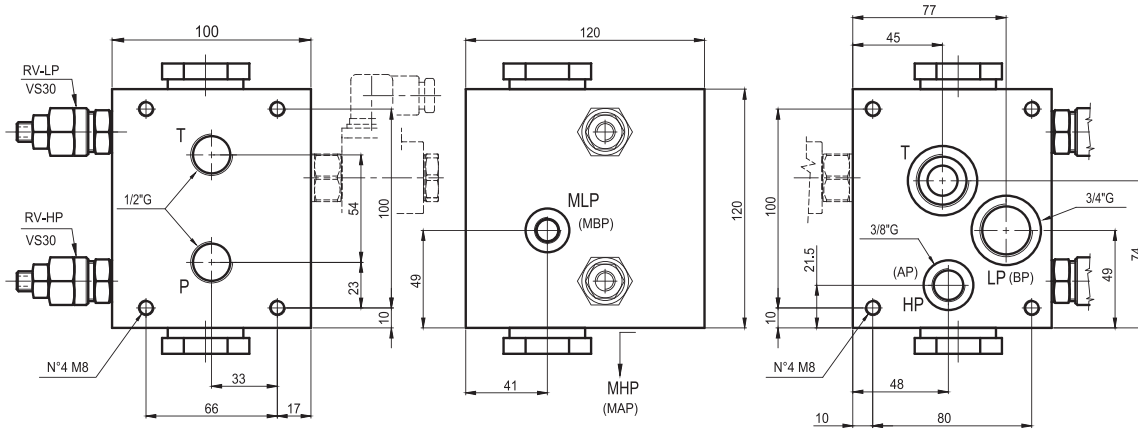
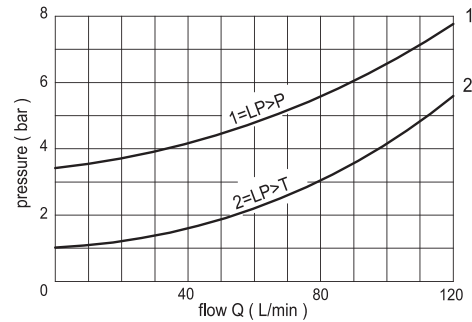
TYPE ET1...5/...



74
ENG

High/low pressure plate, on-line or modular mounting with EC5...
Ports: HP (AP) = 3/8"G, LP (BP) = 3/4"G, T = 3/4"G on rear.
Pre-arranged for electric venting on HP end LP.

TECHNICAL SPECIFICATIONS	
Nominal flow:	120 l/min.
Max pressure:	350 bar
Oil viscosity:	2,8-380 cSt
Oil temperature:	-10°+80° (°C)
Oil type:	mineral HL-HLP DIN 51524
Filtering:	19/15 ISO 4466 (25micron)
Gaskets:	Polyurethane and NBR
Body material:	GG 25
Weight :	10 Kg



Ordering code: ET 1 * 5 / * *
Eurofluid = High/low pressure plate
Packing version = 1
Scheme 1 = 1
Scheme 2 = 2

Low pressure setting (adjust by screw)
0 F = 5-50 bar
1 F = 30-100 bar

High pressure setting (adjust by screw)
2 F = 50-210 bar
3 F = 100-350 bar

CETOP 5

NOTE:

- 1) By scheme 1 the plate is supplied with the closing plugs ETVEI for the cavities of the electric ventig (see page 53)
- 2) By scheme 2 the plates is supplied without the closing plugs for the cavities of the electric ventig (see page 53)
- 3) See page 50 for technical characteristics of VS30

HIGH-LOW PRESSURE BLOCK