

HIGH-LOW PRESSURE BLOCK

TYPE ET215/...



75
ENG

HIGH-LOW PRESSURE BLOCK

High/low pressure plate with port CETOP 5.

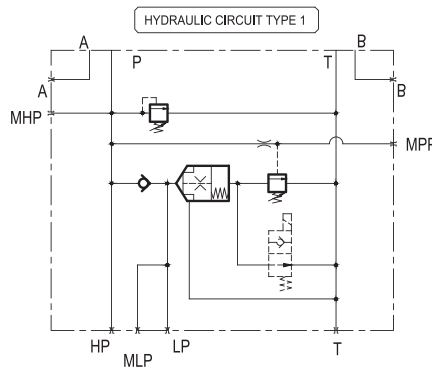
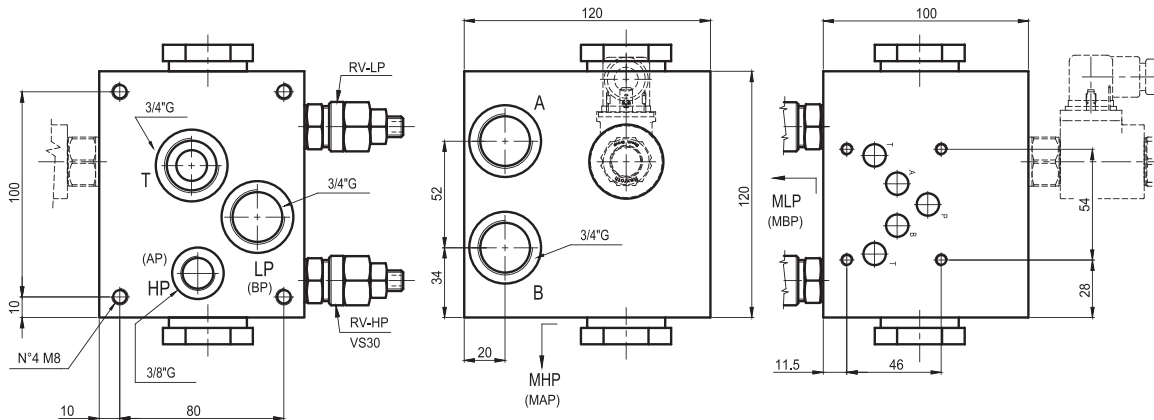
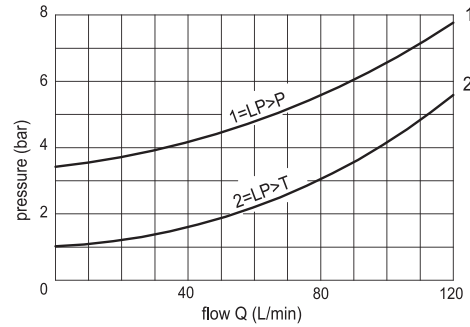
A-B side 3/4"G

HP (AP) 3/8"G, LP (BP) 3/4"G, rear.

T rear 3/4"G

TECHNICAL SPECIFICATIONS

Nominal flow:	120 l/min.
Max pressure:	350 bar
Oil viscosity:	2,8-380 cSt
Oil temperature:	-10° +80° (°C)
Oil type:	mineral HL-HLP DIN 51524
Filtering:	19/15 ISO 4466 (25micron)
Gaskets:	Polyurethane and NBR
Body material:	GG 25
Weight :	10 Kg



Ordering code: **ET 2 1 5 / * ***

Eurofluid = High/low pressure plate

Version port CETOP = 2

Version excluding low pressure = 1

Low pressure setting (adjust by screw)
 0 F = 5-50 bar
 1 F = 30-100 bar

High pressure setting (adjust by screw)
 2 F = 50-210 bar
 3 F = 100-350 bar

CETOP 5

REMARKS: 1) All plates have pre-arrangement for electric venting or replacement plug (see on page 53)
 2) See on page 50 for technical specifications of VS30 valve