

SUBPLATE

TYPE ES3D...L AND ES3D38LL

BASE SINGOLA

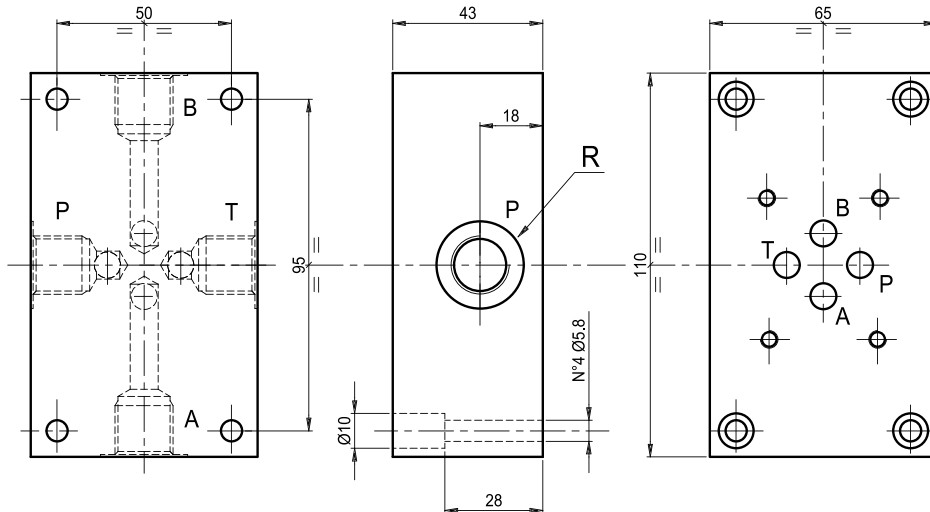
TIPO ES3D...L ED ES3D38LL



5

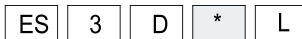
SUBPLATE
BASE SINGOLA

Subplate with A-B-P-T on side. Weight 1.8 kg
Base singola con utilizzi A-B-P-T laterali. Peso = 1.8 Kg



Ordering code:

Esempio di ordinazione:



L = side ports
= utilizzi laterali

Subplate

Base singola = S

38 = R 3/8"G

12 = R 1/2"G

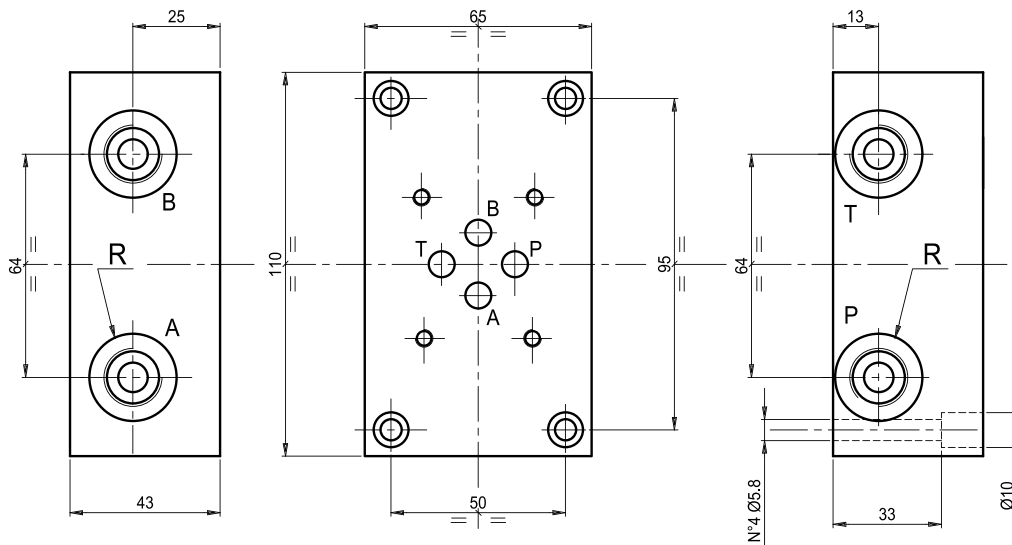
CETOP 3

D = Model / Modello

Hydraulic symbol
schema idraulico

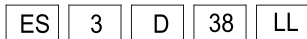


Subplate with A-B-P-T on side. Weight 1.8 kg
Base singola con utilizzi A-B-P-T laterali lato lungo. Peso 1,8 Kg



Ordering code:

Esempio di ordinazione:



LL = side ports
= utilizzi laterali lato lungo

Subplate

Base singola = S

38 = R 3/8"G

CETOP 3

D = Model / Modello

