



# MONOBLOCK

TYPE EM223/R (prearrang. for modular system)

# MONOBLOCCO

TIPO EM223/R (predisp. per riduttrice)

12.3

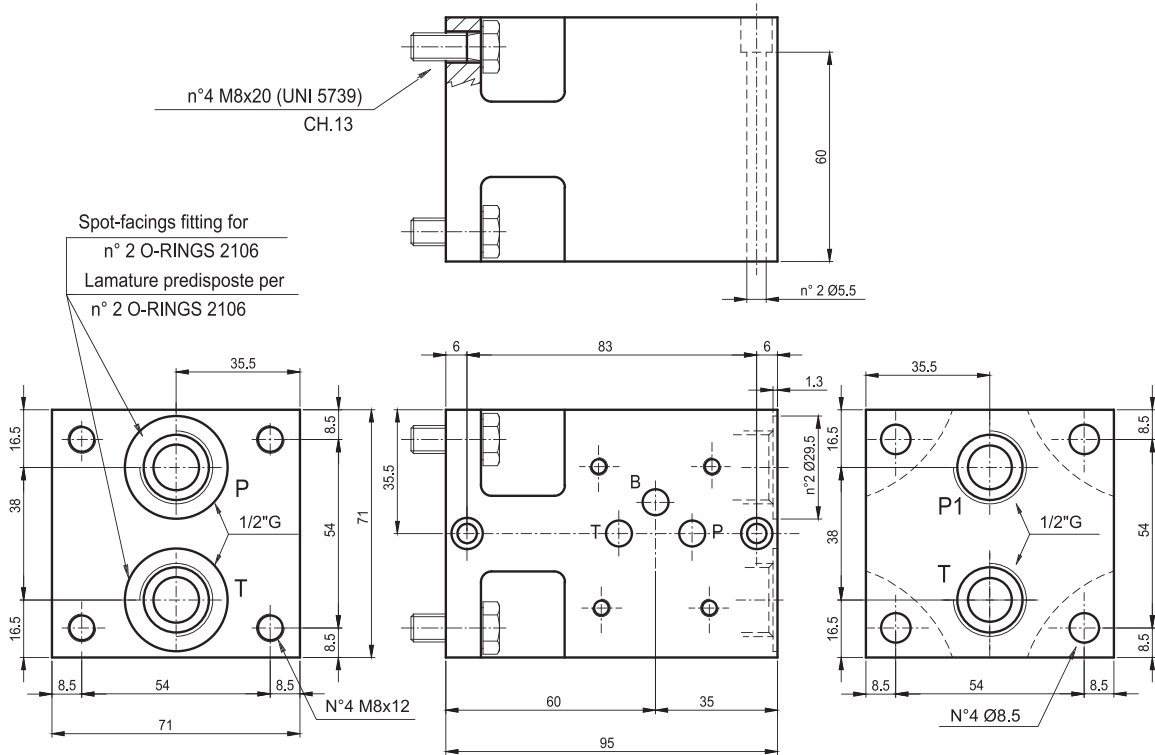
MONOBLOCK  
MONOBLOCCO

Modular block for pressure reducing valve, with ports P-T = 1/2"G.

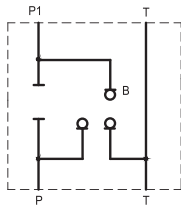
Monoblocco modulare per riduttrice con utilizzi P-T da 1/2"G

Weight = 3.2 Kg

Peso = 3.2 Kg



Hydraulic symbol  
Schema idraulico



NOTE: The monoblock is equipped with the following commercial parts:  
 Nr.4 H.H. screws M8x20 - UNI 5739 - 8.8 - zinc plated  
 Nr.4 washer DIN 6798 A  
 Nr.2 O-Rings 2106 - 90 Sh.

NOTA: Il monoblocco viene fornito completo dei seguenti commerciali:  
 N° 4 viti T.E. M8x20 - UNI 5739 - 8.8 zincate  
 N° 4 entretoise DIN 6798 A  
 N° 2 O-Rings 2106 - 90 Sh

Ordering code

Esempio di ordinazione: **EM** **22** **3** **R**

EUROFLUID  
Monoblok/Monoblocco = M

R = for pressure reducing valve  
= per riduttrice

monoblok for mod. system = 22  
monoblocco modulare = CETOP 3