

# SUBPLATE FOR PACKING

TYPE EC3438...

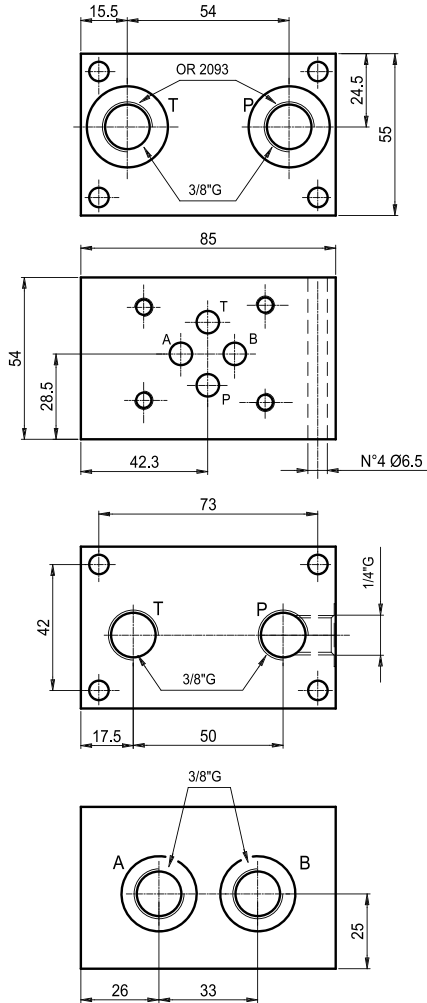
## BASE COMPONENTIBLE

TIPO EC3438...



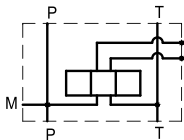
Subplate for packing with A-B  
on back = 3/8"G. Weight 1.4 kg

Base componibile con utilizzi A-B  
posteriori da 3/8"G. Peso 1.4 Kg



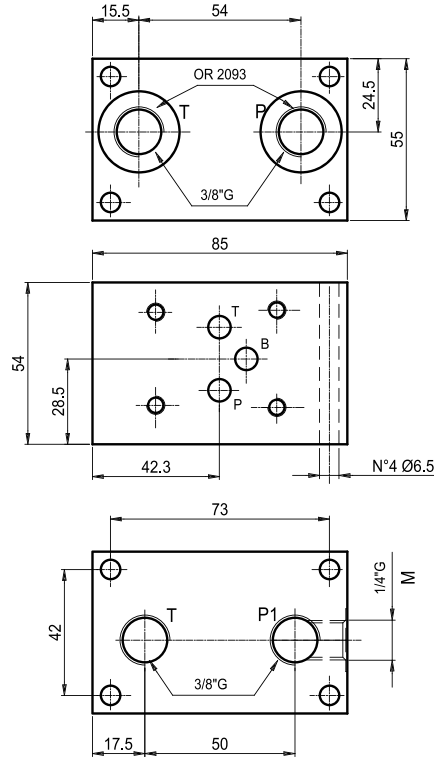
Hydraulic symbol  
Schema idraulico  
TYPE / TIPO

P



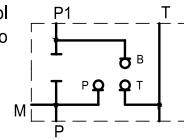
Sub plate for packing, version for  
pressure reducing valve. Weight 1.4 kg

Base componibile versione per  
valvola riduttrice. Peso 1.4 Kg



Hydraulic symbol  
Schema idraulico  
TYPE / TIPO

PR



Ordering code

Esempio di ordinazione: EC 3 4 38 \*

subplate for packing = C  
Base componibile =

CETOP 3

4 tie rods = 4

Versione 4 tiranti =

P = rear ports  
= utilizzi posteriori  
PR = version for reducing valve  
= versione per riduttrice

SUBPLATE FOR PACKING  
BASE COMPONENTIBLE