



SUBPLATE FOR PACKING

TYPE EC5412L AND EC54...P

BASE COMPONENTIBLE

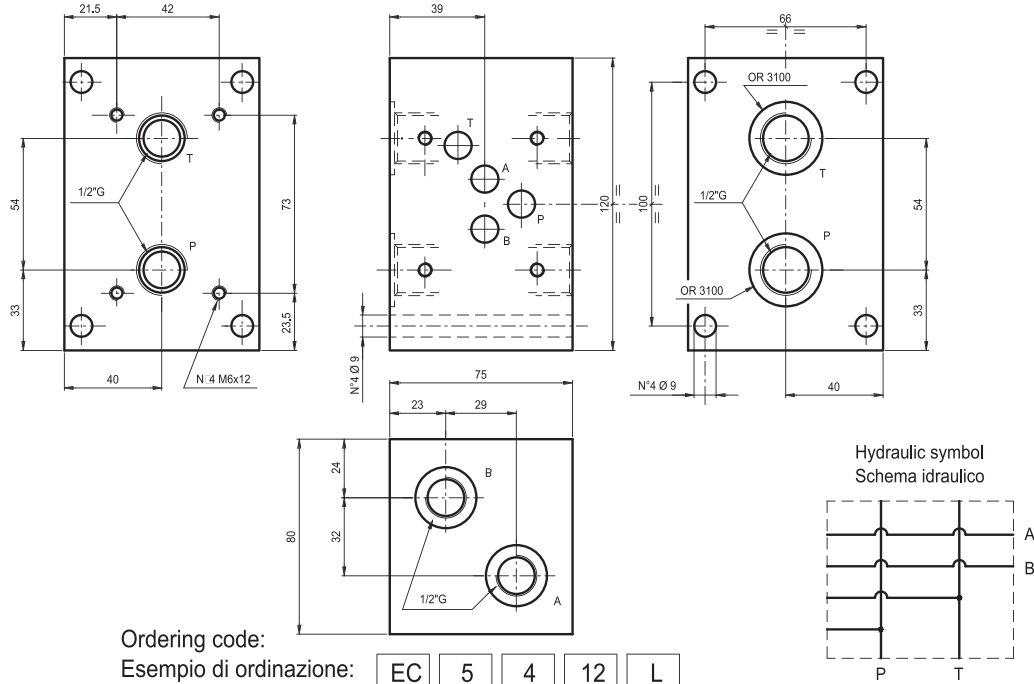
TIPO EC5412L ED EC54...P

25

SUBPLATE FOR PACKING
BASE COMPONENTIBLE

Sub plate for packing with A-B on the side = 1/2" G. Weight = 4.4 kg

Base componibile con utilizzi A-B laterali da 1/2"G. Peso = 4.4 Kg



Ordering code:

Esempio di ordinazione: **EC** **5** **4** **12** **L**

sub plate for packing = C

Base componibile =

CETOP 5

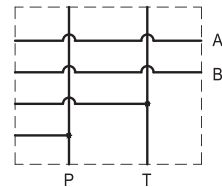
4 tie rods = 4

versione 4 tiranti =

L = side ports
utilizzi laterali

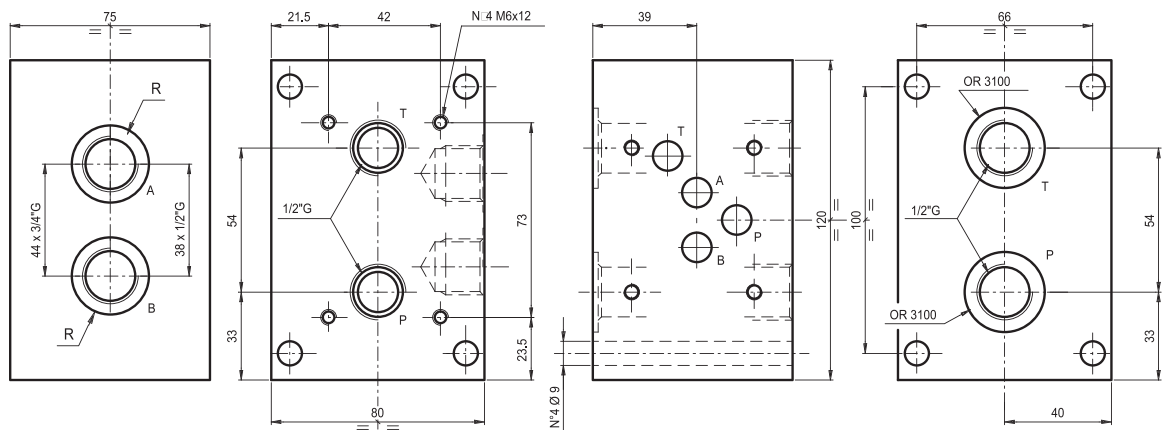
12 = 1/2"G

Hydraulic symbol
Schema idraulico



Sub plate for packing with A-B on back 1/2"G or 3/4"G. Weight = 4.4 kg

Base componibile con utilizzi A-B posteriori da 1/2"G o 3/4"G. Peso = 4.4 Kg.



Ordering code:

Esempio di ordinazione: **EC** **5** **4** ***** **P**

sub plate for packing = C

Base componibile =

CETOP 5

4 tie rods = 4

versione 4 tiranti =

P = rear ports
= utilizzi posteriori

12 = R 1/2"G

34 = R 3/4"G

Hydraulic symbol
Schema idraulico

