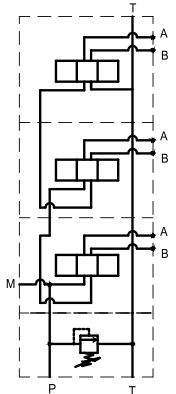
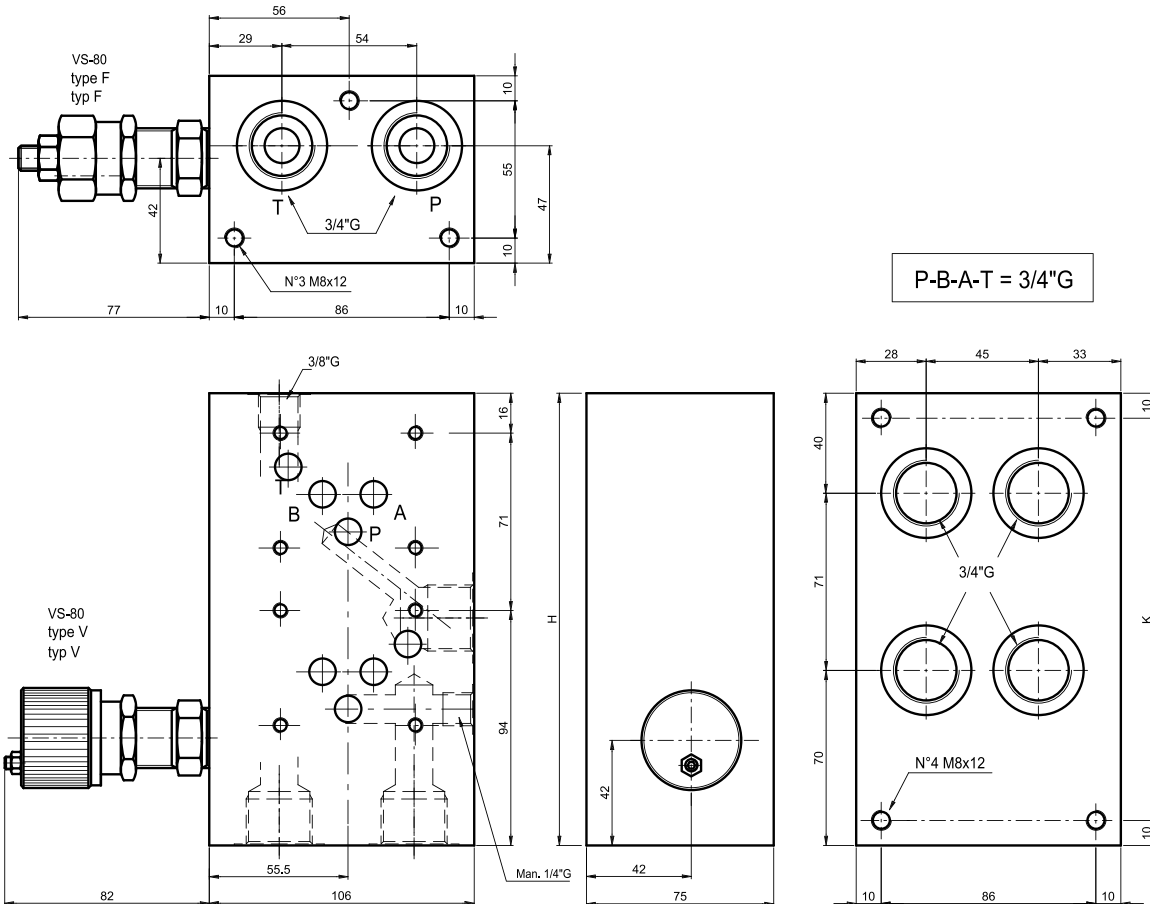




Monoblock with ports A-B on rear, with/without pressure relief valve.(RV) Series connection.

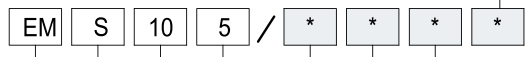
Monoblocco con utilizzi A-B posteriori. Versione in serie, con/senza valvola limitatrice di pressione



Hydraulic symbol
Series connection
Schema idraulico
in serie

N° Elem.	H	K	Kg
2	181	161	11
3	252	232	15

Ordering code:
Esempio di ordinazione:



Monoblock = M
Monoblocco =

series/Serie = S

ports A-B on rear = 10
versione A-B posteriori =

CETOP 5

N° Elements = 2-3
N° stazioni

Setting/regolazione
F = by key/A chiave
V = Handwheel/Volantino

Spring type/tipo molla
1 = 5-60 bar
2 = 35-120 bar
3 = 80-250 bar

Z = prearranged for RV
= con sede per VLP
T = with plugged RV seat
= con sede tappata per VLP
X = with RV included
= con VLP inclusa

NOTES : See page 92 for technical characteristics of RV

NOTA: Per informazioni tecniche relative alla VLP vedere pag 92