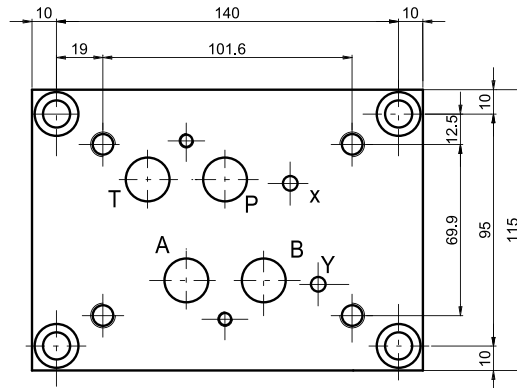
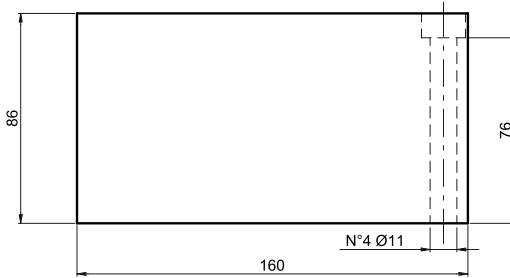
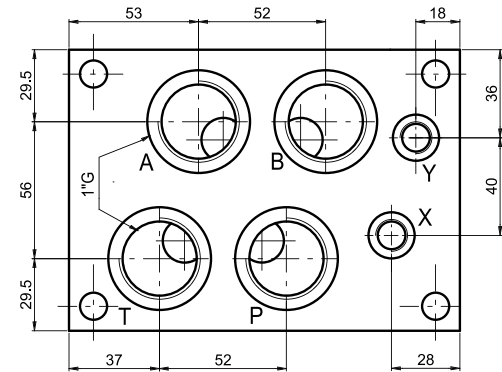
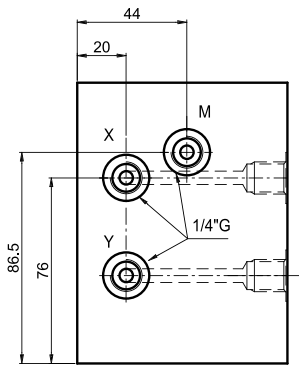
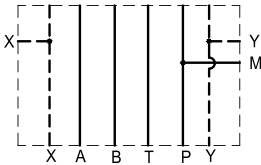




Subplate with A-B-P-T on rear = 1" G
 Weight = 10 Kg
 Base con utilizzi A-B-P-T posteriori da 1"G
 Peso = 10 Kg

Hydraulic symbol
 Schema idraulico



Ordering code:

Esempio di ordinazione:

ES	7	10	P
----	---	----	---

subplate = S
 Base singola =

CETOP 7

1"G = 10

P = A - B - P - T on rear / posteriori